

# TROPICAL SUBURB HOUSE

## 戴着“草帽”的房子

设计 / My An Pham Thi 摄影 / Hiroyuki OKI 编译 / 范嘉苑

项目地址 越南  
项目面积 280m<sup>2</sup>  
设计单位 MM++ Architects





My An Pham Thi,  
越南MM++ Architects创始人  
兼主设计师。

本案位于越南胡志明市的一个城郊住宅区中，基址宽10米、深20米，是一座半独立式的样板房。房子并未采用周遭住宅的新维多利亚式风格，而是延用了当地的东南亚风格的干栏式建筑结构，屋顶还铺了一层干草，看上去就像是一座戴着“草帽”的房子，充满热带风情。

略高于水平面的首层空间涵盖了厨房、餐区以及一个小露台，这里采用了开敞式的布局，三面皆与庭院相通，游泳池则位于庭院深处，餐区的后侧。高高的围墙不仅给居住者营造良好的隐私感，还能遮挡住强烈的日光。下雨天的时候，可以把屋檐边上的竹帘放下来，以防止雨水溅入屋内。游泳池除了供业主休闲娱乐以外，还能让周围的空气变得凉爽一些。到了晚上，放下厨房旁边的自动防火帘即可保证房子的安防安全。庭院里种植了各种高矮不一的树木以及爬墙植物，整座房子就置身于这片葱郁的绿色之中。

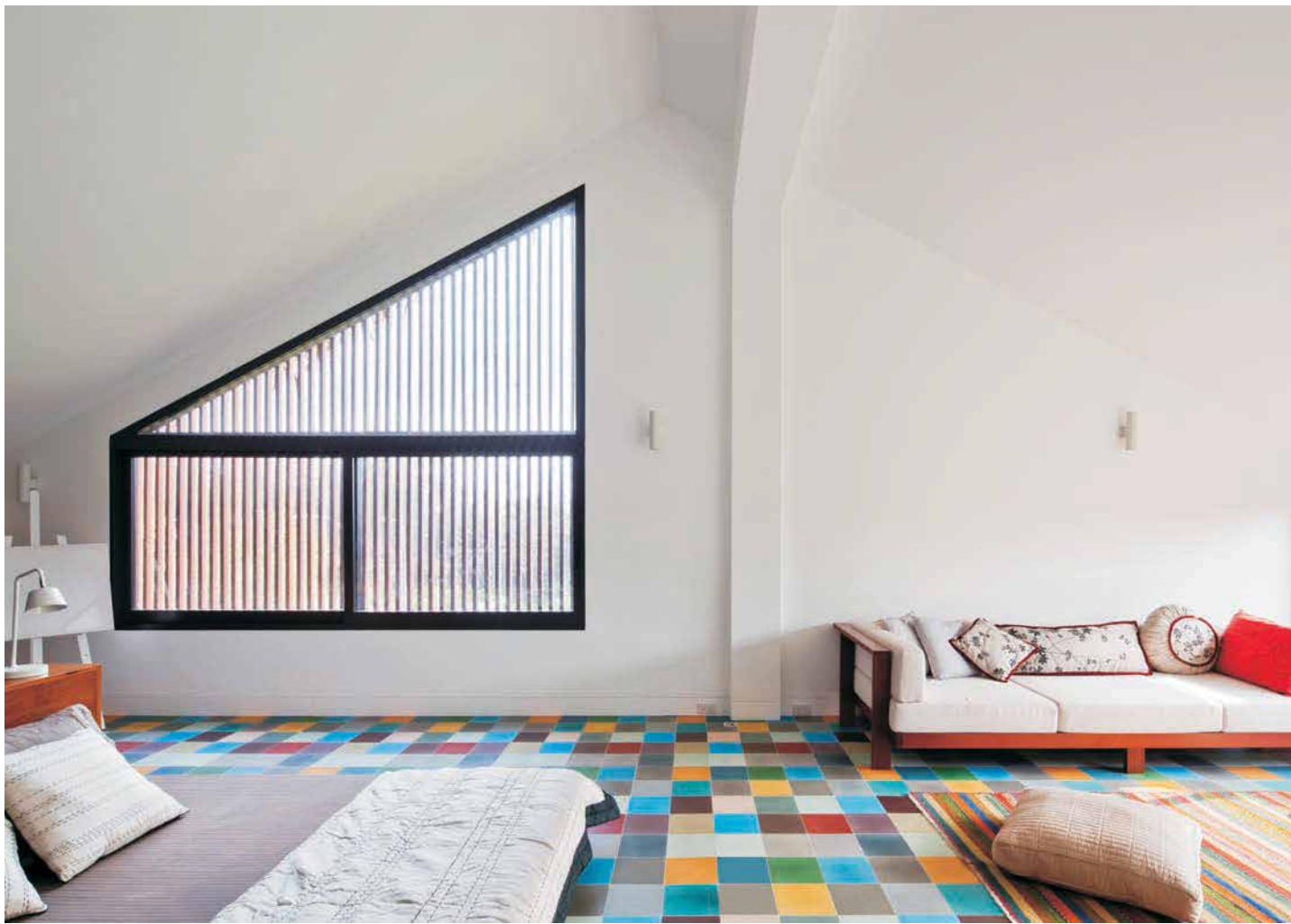
二层空间的南面与西面的墙壁是由回收砖块砌成的双层孔洞墙，空气从洞孔间穿过，让整个二层空间获得了良好的通风效果，也让室内空间更加凉爽。落地窗则给住户提供了绝佳的观景视野。地面及天花板

都采用了原始质朴的混凝土材质，家具色彩则以浑厚的木色为主，并加入了些许红色元素，如扶手沙发和楼梯，以此点亮整体空间。大面的木质落地书柜不仅起到了收纳及装饰的作用，同时也成为了客厅与楼梯之间的隔间。

原本的阁楼空间被改造成一间宽敞的卧室，该层以空旷舒适作为主要的设计理念，大面的滑动窗户、彩色格子地毯、柔软的大号坐垫给整个卧室营造出了温馨恬静的生活气息。阁楼下的浴室空间也是该层的一大亮点，阳光透过斜屋顶上的屏风照入室内，浴缸旁的绿植则顺沿着墙面延伸至斜屋顶外。在阳光的照耀下，斑驳的叶片影子映在了薄荷绿的墙面上，让小巧的浴室空间也充满了盎然生机与灵气，并降低了混凝土材质带来的热度。

该项目舍弃了传统的样板房设计思路，它的结构及样式适应了当地的热带气候，并用天然的空气流通取代空调电器，将室内外空间自然而然地连接起来，成为了一间亲近自然、返璞归真的宅邸。





The house is built on a 10m wide and 20m deep plot in a residential suburb district of Saigon. The area regulation imposes a semidetached house template. In contrast with the "neo-Victorian" houses surrounding, this house revisits the vernacular South East Asian stilt house typology.

The raised ground floor with the kitchen, the dining and the platform area, is one single space, fully open on three sides from the front yard, the garden to the pool in the back. High fence walls provide privacy, prevent from direct sun light and intrusion. In case of heavy rain, bamboo screens prevent from the water. The pool helps to cool down the airflow. By night, the place is secured by an automatic shutter along the kitchen. The landscape, with a mix of high and middle height trees and wall growing plants, is surrounding the construction. The house will soon be immersed into lush vegetation.

On the first floor, the living room and the staircase get benefit of permanent crossing ventilation through the recycled bricks wall openwork. Double brick walls on south and west elevation keep internal spaces cool. Floor to ceiling windows bring views over the wall to the surrounding.

Attic space is converted into a large bedroom. Openness is also the main concept here with large sliding windows and an open air bathroom. Direct sun light is filtered through a timber screen and vegetation in built-in large planters. The palm leaves are layered on the roof slab to prevent the concrete to heat during the hot hours of the day.

This project proposes an alternative to the archetype house that developers usually present to the public. A typology adapted to tropical weather conditions, promoting natural ventilation instead of the air conditioning, invisible indoor/outdoor boundaries, closer to nature, instead of enclosed living spaces. **M**

